

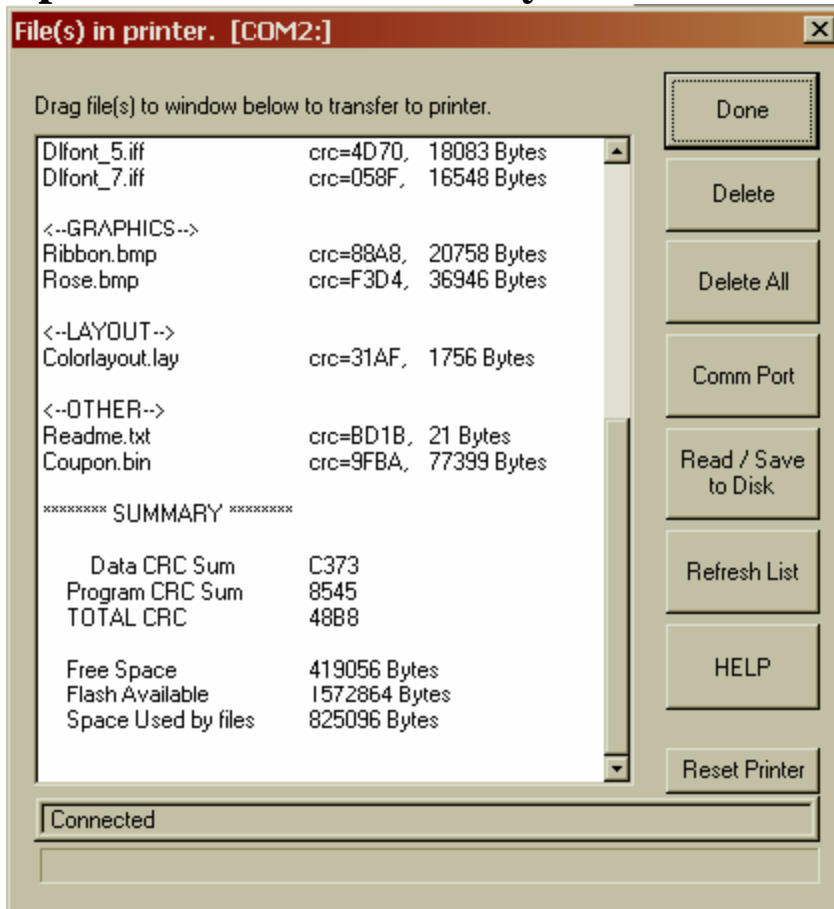
Epic 950™ Smart Suite Utilities Overview

Ticket Layout Editor



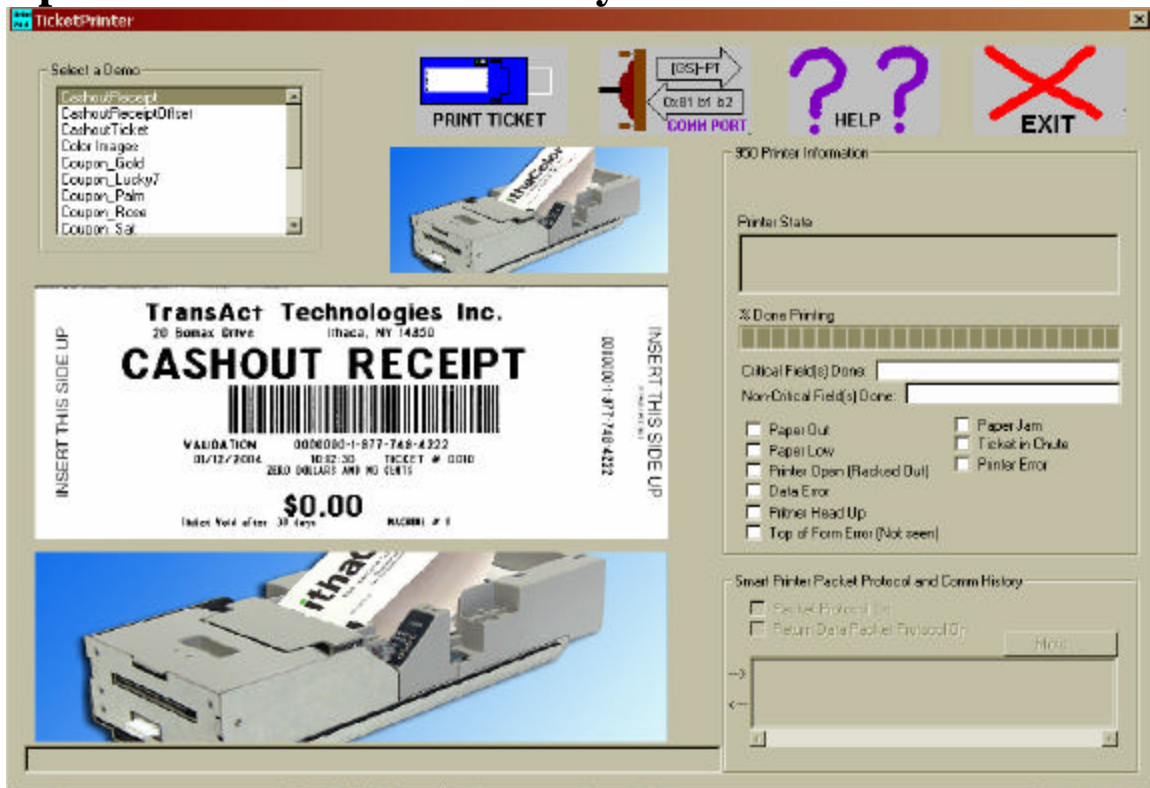
This utility lets you create a ticket layout with its associated Graphics, text and barcode specification. You create the desired ticket layout with this tool and then “Export” the ticket layout (.lay) along with the graphics bitmaps(.bmp).

Epic 950 Download Utility



This utility allows you to query, read, and send information to your Epic 950 printer. The main display of the download utility displays printer data contents as files. This tool can be used to transfer any type of data; including graphics, ticket layouts, fonts, etc. You must load the files you export from the Ticket Layout Editor into the printer using this download utility.

Epic 950 Printer Demo Utility



To print tickets, you can use the Epic 950-printer demo utility. First, you will need a demo script file (.dmo). Several example .dmo files come with the Epic 950 Printer Demo utility. You can create your own demo (.dmo) script. Use one the demo files provided with the Epic 950 demo utility as a guide. To print a ticket that utilizes a layout file that you have created, you must use the [GS]~PT <yourlayout.lay>^^ syntax. See the Smart Printer appendix in the OEM Integration manual.

NOTE: Epic and imPort are trademarks of TransAct Technologies, Inc.